

GTMR 386 A

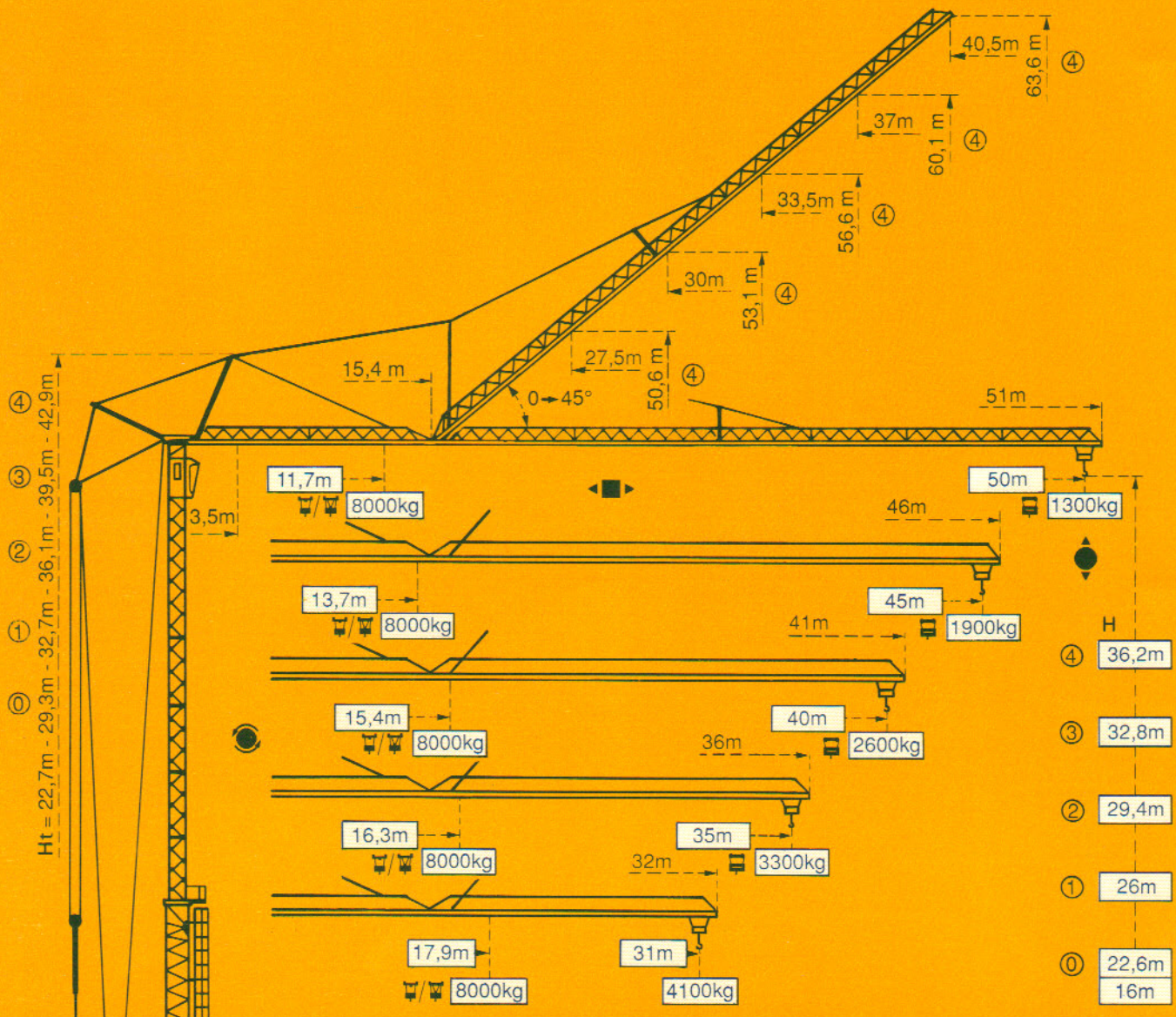
POTAIN 

Cotes

Abmessungen

Dimensions

Dimensiones

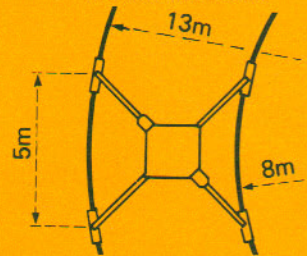
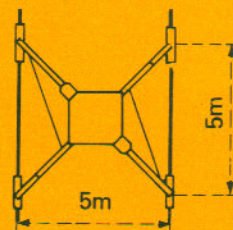
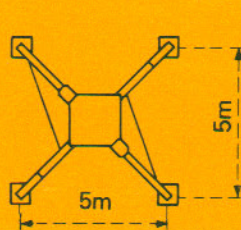


④ Stationnaire - Stationär - Stationary - Estacionaria


Version sur vérins
Ausführung auf Abstützspindeln
Jacks version
Versión sobre gatos

Version voie droite
Ausführung gerade Schienenbahn
Straight track version
Versión vía recta

Version voie courbe
Ausführung Kurvengleis
Curved track version
Versión vía curva



F1 = Réactions Eckdrücke Reactions Reacciones


F1	● 45t	■ 38t
	31t	


● En service
■ Hors service


● In Betrieb
■ Ausser Betrieb

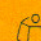
● In service
■ Out of service

● En servicio
■ Fuera de servicio

 A vide sans lest ni train de transport, avec flèche et hauteur maximum.

 Ohne Last, Ballast und Transportachse, mit Maximalausleger und Maximalhöhe.

 Without load, ballast or transport axles, with maximum jib and maximum height.

 Sin carga, sin lastre, ni tren de transporte, flecha y altura máximas.

Courbes de charges

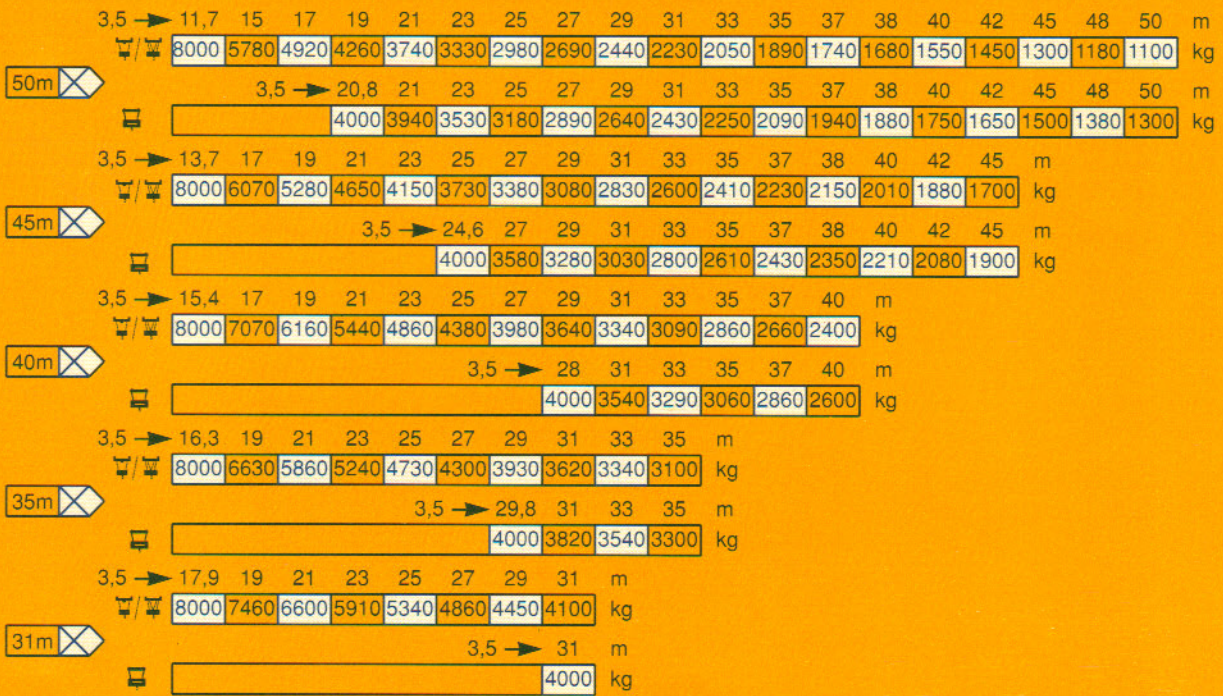
Lastkurven

Load diagrams

Curvas de cargas



Flèche Ausleger Jib Flecha



Flèche relevée

Ausleger in Steilstellung

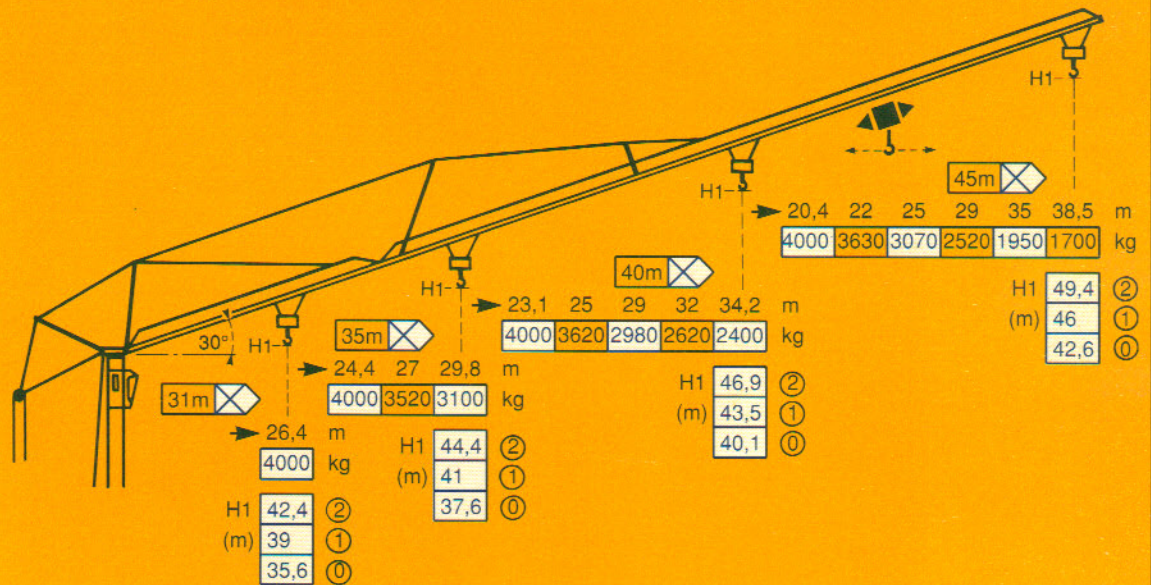
Luffing jib

Flecha izada



5 D3 V4

Chariot distributeur et
Courbes de charges
Verfahrbare Laufkatze
und Lastkurven
Traversing trolley and
Load diagrams
Carro distribuidor y
Curvas de cargas

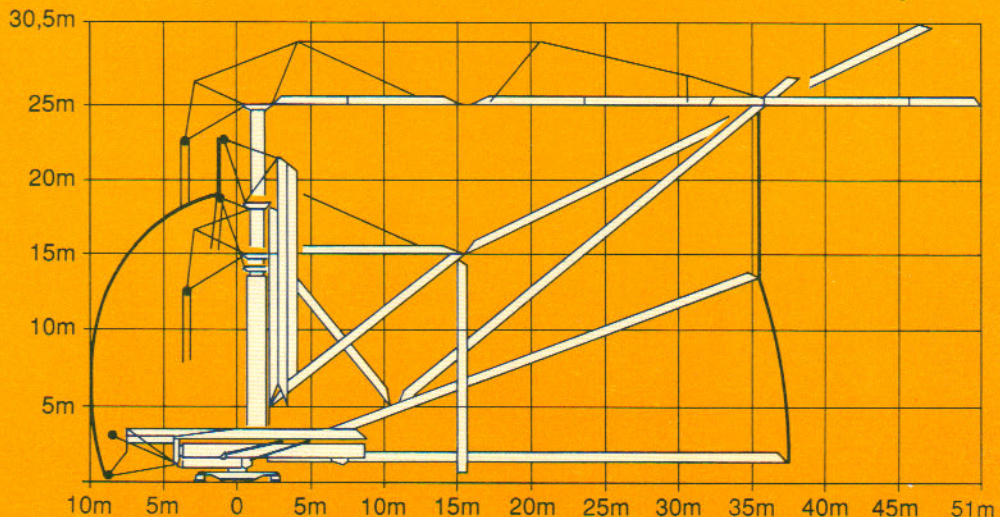


Montage

Montage

Erection

Montaje


















Mécanisme

Antriebe

Mechanisms

Mecanismos

				m/min	kg	ch-PS hp	kW
Levage Heben Hoisting Elevación	33 PC 20 			5.4	4000	33	4
				30	4000		
				60	2000		
				2.7	8000	33	4
				15	8000		
				30	4000		
Distribution - Katzfahren Trolleying - Distribución		5 D3 V4	15-30-58		5.5	4	
Orientation - Schwenken Slewing - Orientación		RCV 62	0 → 0.8 tr/min U.min-rpm		8	5.9	
Translation - Kranfahren Travelling - Traslación		Standard	25		2 x 4	2 x 3	
Réseau - Netzstrom - Mains supply - Red						380V - 50HZ	
Puissance électrique nécessaire - Anschlusswert - Necessary electric power - Potencia electrica necesaria						50 KVA	
Groupe électrogène - Stromaggregat - Generator set - Grupo electrogeno						*	

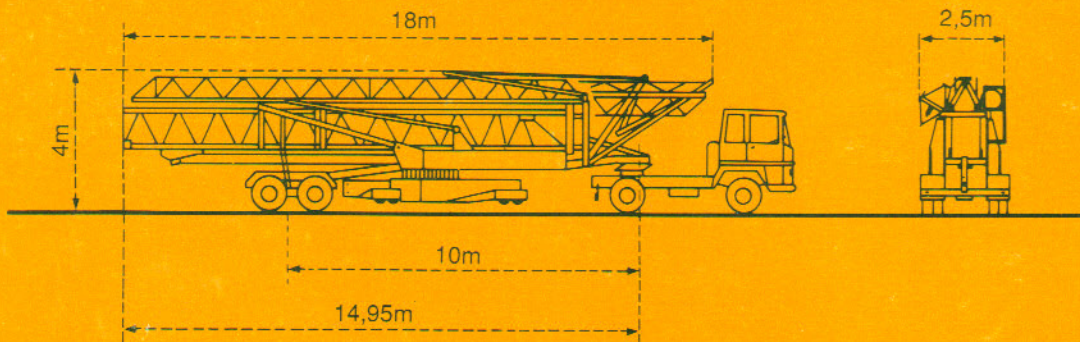
* Nous consulter - Auf Anfrage - Consult us - Consultanos

Transport

Transport

Transport

Transporte



Version semi-portée
 Ausführung als Sattelaufleger
 Tractor towed version
 Versión en semi-remolque

Conforme à la directive CEE 84/534 sur le niveau acoustique - Gemäss EWG-Richtlinie 84/534 über Schall-Leistungspegel
 In compliance with the EEC 84/534 Instruction on noise level - Conforme con la directiva CEE 84/534 sobre el nivel acústico

DIN 15018 H1 B3

NF E52081 - 82

POTAIN 

18, rue de Charbonnières, B.P. 173-F 69132 ECULLY Cedex
 Tél. 72.20.20.20 - Télex 330 179 - Télex. Export 375 213 -
 Fax 72 20 20 00

POTAIN GmbH 6082 MÖRFELDEN WALLDORF
 Nordendstr. 79-87 - Postfach 420
 Tél. 06 105 704.0 - Télex 4.1857 45

GTMR 386 A

Réf. 1989.06 KXU 5

Modifications réservées. Änderungen vorbehalten. Subject to modification. Modificaciones reservadas

Printed in France